



## The New Series of Integrated Servo Motors

The new electronics series of the HeiTronX platform sets new standards in drive technology. The HeiTronX Superior-Line (HTS) combines **maximum performance** with exceptional **compactness** and thus offers 100% higher power density. Thanks to the slim design, the motor can be easily integrated into various applications.



### Flexibility and Precision

A wide range of interfaces, such as EtherCAT® as standard as well as PROFINET® and CANopen® in expansions ensure maximum **flexibility** and **smooth system integration**. In addition the HTS motor has an optional integrated high-resolution multiturn encoder that guarantees maximum precision.

### Maximum Operational Safety

With **up to 13 safety functions** in the final implementation, the HeiTronX Superior motor offers maximum operational safety. The optional inputs and outputs are various, flexible and can be used individually. The controller has a smart connector system that allows daisy chaining for both the bus systems and the power supply. Our Y-Tec connector system, which is available as standard, can also be used as an option.

### Individual Customization and Efficient Monitoring

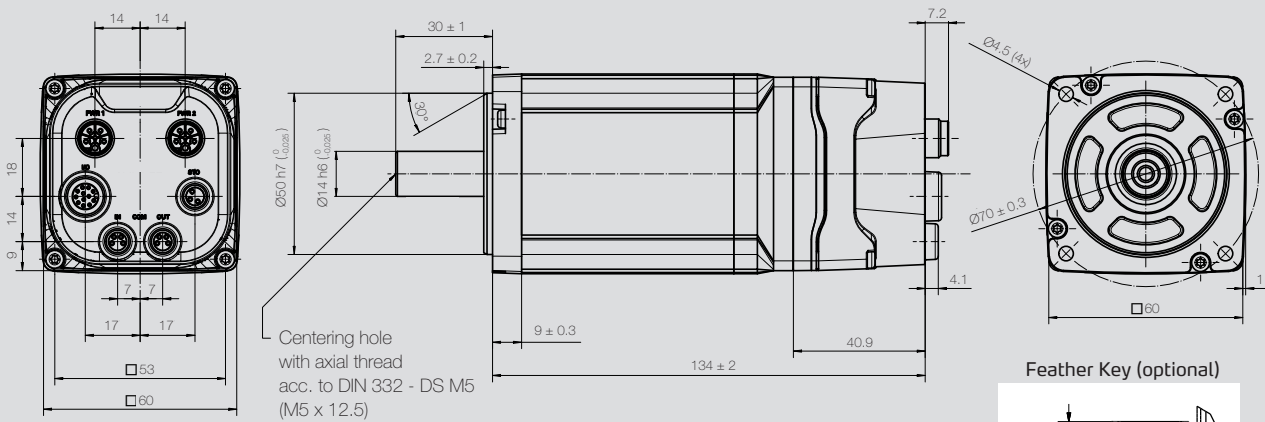
Based on the proven HMD Next Generation series – which can be **combined with a wide range of gearboxes and brakes** – the HTS motor is available in the flange sizes 60 and 80. The motors are preconfigured which means they are ready for operation and can be customized via a web-based user interface. With the integrated status display (LED) it is possible to get an overview of complex drive solutions with several components at any time.

### The Best Solution for Modern Drive Technology

HeiTronX Superior impresses with cutting edge motion performance and is perfect for demanding applications that require maximum precision, dynamics and efficiency. The combination of power-dense motors, optimized windings and compact servo controllers makes it the best solution for pioneering drive technology.



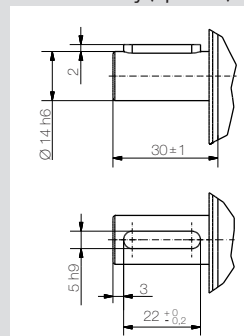
## Dimensions HMDio6 HTS



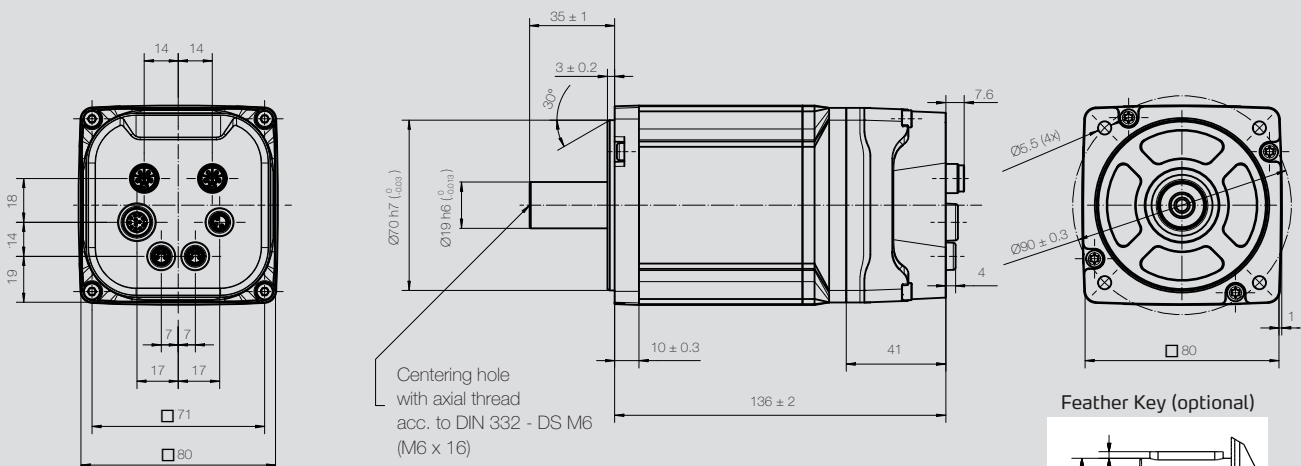
Motor available with directly mounted planetary gear (see catalog "HMD Next Generation – Servo motors with planetary gears").

Permissible axial and radial forces (see catalog "HMD Next Generation – Servo drive systems").

Feather Key (optional)



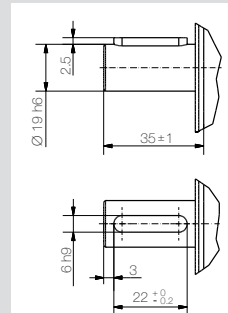
## Dimensions HMDio8 HTS



Motor available with directly mounted planetary gear (see catalog "HMD Next Generation – Servo motors with planetary gears").

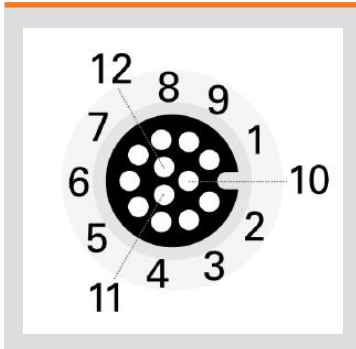
Permissible axial and radial forces (see catalog "HMD Next Generation – Servo drive systems").

Feather Key (optional)



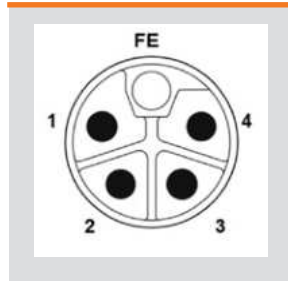
# Pin Assignment

M12 I/O



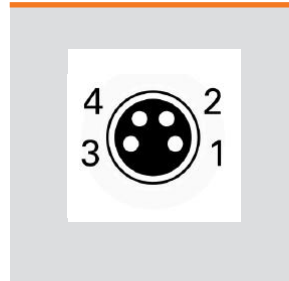
Pin	Function
1	AI_2_n/Clock-/B-
2	I-
3	DI_1/DO_1
4	DI_2/DO_2
5	DI_3 (Fast DI)
6	DI_COM
7	AI_1_p/Data1+/A+
8	AI_1_p/Data1+/A-
9	AI_2_p/Clock+/B+
10	GND
11	I+
12	+24V_out

M12 Power



Pin	Function
FE	Functional earth
1	Vin
2	GND
3	Vin
4	GND

M8 EtherCAT®



Pin	Function
1	TX+
2	RX+
3	RX-
4	TX-

M8 STO



Pin	Function
1	STO B (+24 V)
3	STO A (+24 V)
4	STO GND

Technical data subject to change! Last changes: 03/2025

## Heidrive GmbH

Starenstraße 23  
93309 Kelheim

Phone +49 9441/707-0  
Fax +49 9441/707-259

info@heidrive.de  
www.heidrive.com

